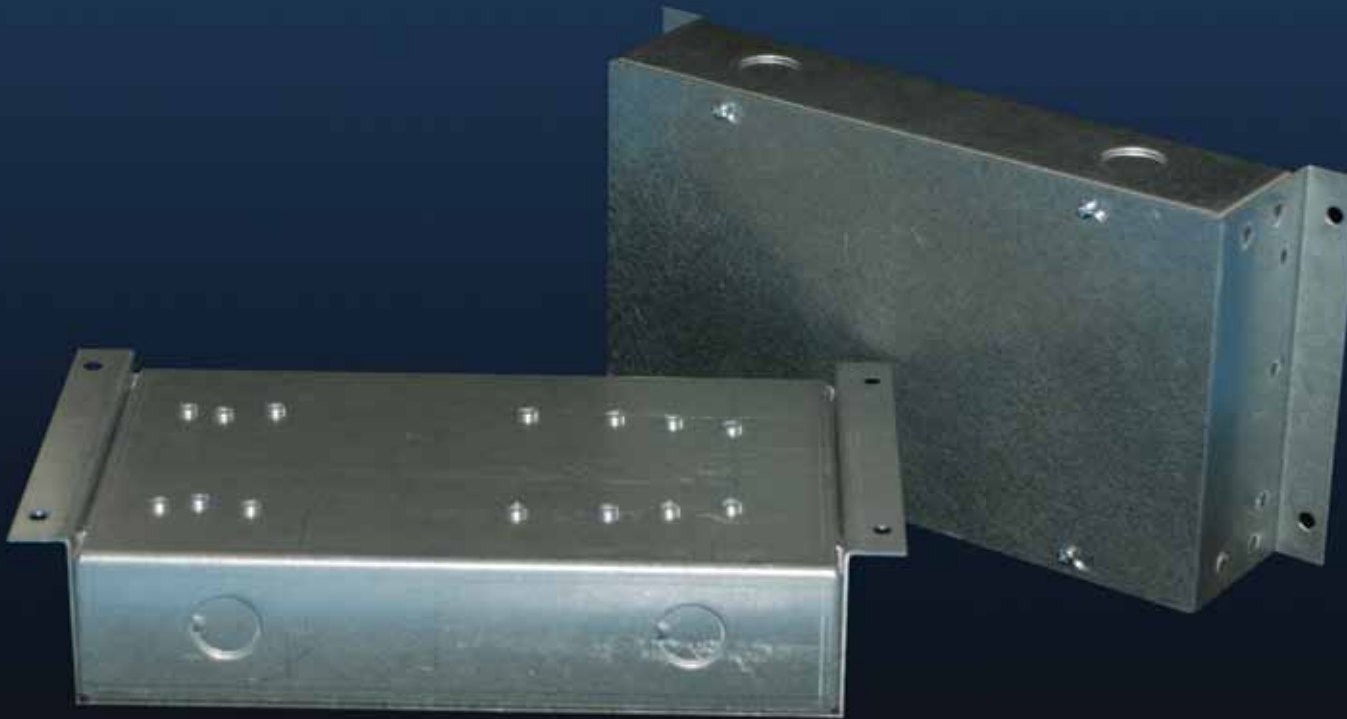


SKLITE-X ELEVATOR CAB LIGHTING



OTIS ELEVATOR CAB LIGHTING

The SKLITE cab lighting system was designed to provide an intelligent efficient LED based lighting solution for elevator cabs.

FEATURES:

- > Dimming on board circuit with 10 brightness settings.
- > External light switch input.
- > Supports up to 6 - 3Watt fixtures in 77mm and 120mm format.
- > Incorporates intelligent load software.
- > Optional remote dimming

TYPICAL:

6 lamp ceiling with 50W lamps.

300W / 1000 x 24 hours x .10 kwtt x 365 days = \$263.00

18W / 1000 x 24 hours x .10 kwtt x 365 days = \$16.00

Watts vs. BTU 1 watt is 3.41 BTU

300W x 3.41 = 1023 BTU/HR

18W x 3.41 = 62 BTU/HR

961 BTU/HR / 3.41 = 282W \$247.00

Typical Savings \$494.00 / YR

SK077 | SK120:



OTIS

Otis Elevator Company

Newberry Road

Bloomfield, CT

Ph: 860.676.6000

www.otisworldwide.com

Otis Worldwide

